



AZZ/FB PRESSURE TANK

AZZINI

■ GENERAL FEATURES.

The AZZ/FB tank is made of ASTM A240 austenitic steel in 304 - 304L - 316 versions, being cold-rolled with 2B-grade finishing and hot-rolled with 1-finishing. All welding is carried out using automatic TIG welding processes from both sides of the joint for the first bead pass which is then followed by coated electrode pass filling. The tank is subjected to one of the following tests:

- ISPEL
- TÜV
- ASPC
- ALPAVE

The tank is insulated with fibre glass panels treated with thermosetting resins.

The insulation-protected outer coating is of totally welded AISI 304 stainless steel, thus producing perfectly airtight tanks. The special casing technique allows for expansion caused by local temperatures. The outer coating combines aesthetics with mechanical performance, is easily washable and highly shock-resistant.

■ FINISHING.

2B-grade inner and outer surface finishing is guaranteed by using protective adhesive plastic film before starting any kind of working operation.

Finishing available on request:

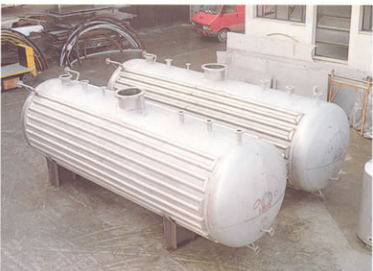
- satin finish of the truncated pyramid legs or support seating;
- satin finish of inner welds: grinding of the latter with 80- and 100-grain rough machining discs in the second pass stage, and finishing with 220-grain laminary wheel;
- polishing of inner welds: grinding of the latter with 80- and 100-grain rough machining discs in the second pass stage and 220-grain belt with polishing paste in the third pass stage. Finishing with ventilated flannel-cloth discs and 320-grain polishing paste;
- inner/outer satin finish: after careful preparation of all the welds concerned (and relative grinding), three different passes are made with 60-, 100- and 150-grain abrasive belts. Final satin finishing is executed with 220-grain medium taicron wheels;
- internal polishing: after careful preparation of all the welds concerned (and relative grinding), three different passes are made with 100-, 150- and 200-grain abrasive belts, the latter with polishing paste. Final polishing is effected with flannel-cloth belts and 320-grain polishing paste.



■ 3 bar/FV tank - ISPEL-insulated.



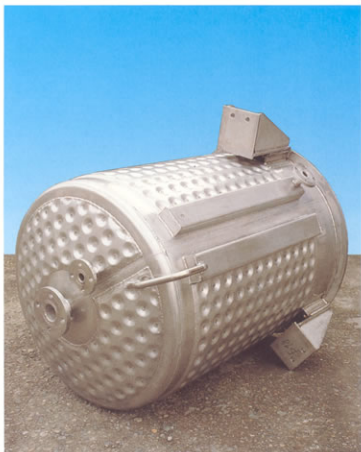
■ Manhole detail.



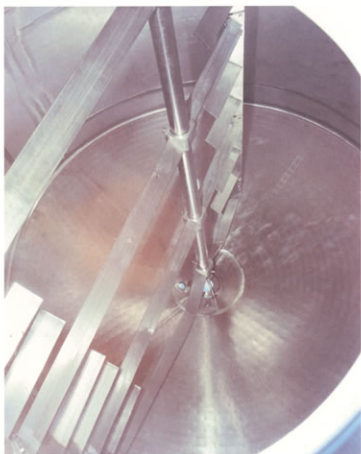
■ 6 bar ISPEL tank.



■ Special tank.



■ Open reactor.



■ Cream mixer.



■ Rake.



■ Upper base detail.

AZZINI

AZZINI S.p.a. Via IV Novembre, 58 - 26015 Soresina (CR) - Casella Postale 34 - Tel. (0374) 343952-340244 (ric.aut.) - Telefax (0374) 343505

This publication is intended as a general guide to Azzini products and services. More detailed information may be obtained - without obligation - from the Azzini research and project centre tel. 0374-343952 - Telefax 0374-343505.